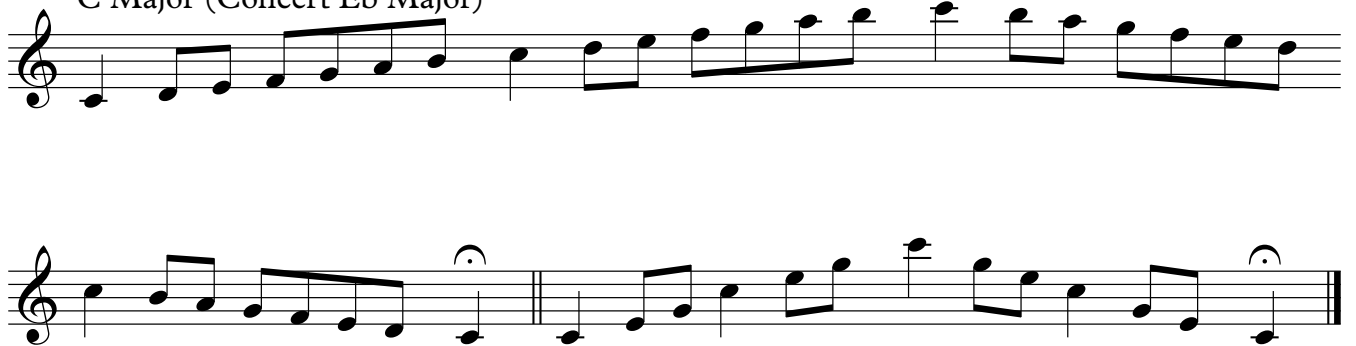


Two-Octave Major Scales

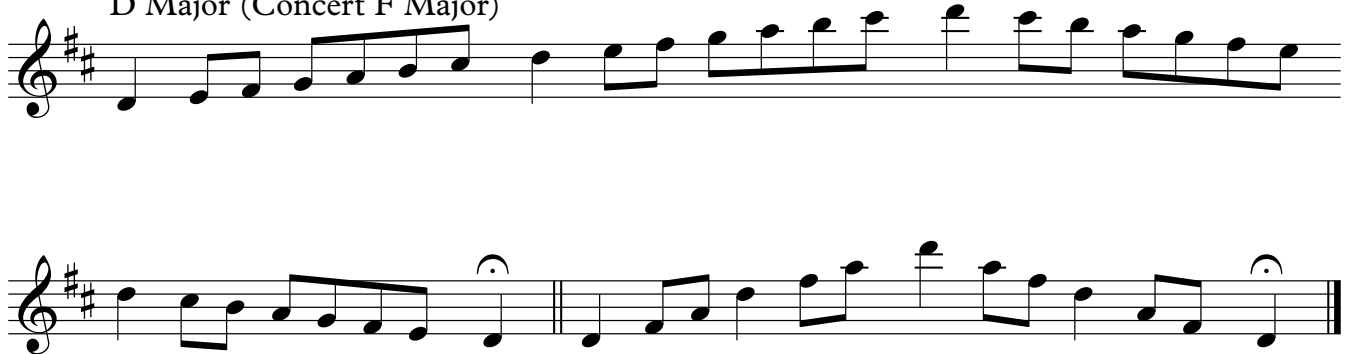
C Major (Concert Eb Major)



G Major (Concert Bb Major)



D Major (Concert F Major)



A Major (Concert C Major)



E Major (Concert G Major)

Two staves of musical notation for E Major (Concert G Major). The first staff contains a melodic line starting on E4 and moving up stepwise to G5. The second staff contains a similar melodic line with a repeat sign and fermatas on the final notes.

B Major (Concert D Major)

Two staves of musical notation for B Major (Concert D Major). The first staff contains a melodic line starting on B3 and moving up stepwise to D5. The second staff contains a similar melodic line with a repeat sign and fermatas on the final notes.

F# Major (Concert A Major)

Two staves of musical notation for F# Major (Concert A Major). The first staff contains a melodic line starting on F#4 and moving up stepwise to A5. The second staff contains a similar melodic line with a repeat sign and fermatas on the final notes.

Db Major (Concert E Major)

Two staves of musical notation for Db Major (Concert E Major). The first staff contains a melodic line starting on Db3 and moving up stepwise to E5. The second staff contains a similar melodic line with a repeat sign and fermatas on the final notes.

Ab Major (Concert B Major)



Eb Major (Concert F# Major)



Bb Major (Concert Db Major)



F Major (Concert Ab Major)

